

LIVE OUTSIDE

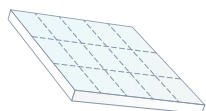


THE SANCTUARY HOME LINE

Edgewood

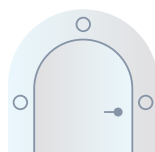
THE TOOLS OF SELF-RELIANCE

Environmental concerns, political unrest and burnout have all contributed to a recent surge in families looking for the peace of mind offered by semi, or fully, off-grid living. If you're ready to **live outside**, without sacrificing luxury, a Sanctuary Home by Edgewood combines artistic architecture and craftsmanship, with all the capabilities needed to be self-reliant and safe.



ALTERNATIVE HEAT & ENERGY

There are more technologies available today than ever which can provide reliable off-grid heat and power. We'll consider the options most practical for your home and specific location, such as active and passive solar, geothermal heat pumps, convective cooling, and more.



STORM SHELTER / SAFE ROOM

We can build areas of your house that offer additional protection from extreme weather conditions, EMF and radiation exposure, or home invasion. These can be simple rooms, or entire floors, equipped with the comforts of home, and ample space for long-term food pantries, safe rooms, gun lockers, etc.



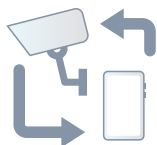
INDEPENDENT WATER SYSTEM

Our engineers can determine how best to capture and manage your home's most valuable resource: water. Whether we source from wild water, harvested rainwater, a well system, cistern tank, or a combination, we'll ensure your family has reliable access to clean water.



WILDLAND FIRE PROTECTION

Our proprietary cathedral roof system, the Thermal Blanket™, combined with our thick, handcrafted full log walls, carries a Class "A" fire rating against wildfires. Additional protection can be provided by creating defensible spaces, and installing fire sprinkler and/or suppression systems.



REMOTE SURVEILLANCE

Your home can be equipped with indoor and outdoor security cameras, running live feeds accessible from anywhere in the world. Programmed to deliver custom alerts to your smartphone, these systems keep your family informed and secure.



BROADBAND CONNECTIVITY

Advances in satellite-internet service have allowed us to work, study and stay connected in even the most remote locations. We can install the system that offers your location the fastest, most reliable connection, including Starlink, where available.

The SANCTUARY LINE PROCESS

To begin the process of building your own Sanctuary home, please fill out our questionnaire here:

<https://liveoutside.edgewoodlog.com/sanctuary-home-preview/>

If we look like a good match, we will schedule an interview to discuss your Sanctuary home details and a potential project timeline. If we all agree to move forward, a contract is developed to secure your position on our wait list.

We take on a limited number of projects each year to ensure that we can thoughtfully consider all of your family's wishes and maintain a fun, collaborative, and transparent process.

Edgewood handles everything in-house, freeing you from the tedious process of coordinating builders, architects, engineers, interior designers, material suppliers and craftsmen. As many of our enthusiastic clients can attest, with a single point of contact, we offer an enjoyable design/build experience from start to finish, that's on time and on budget.

PRE-QUALIFICATION

1. QUESTIONNAIRE

Complete our [questionnaire](#). This provides us with information about your project, including the site location, approximate budget, and square footage of the home.

2. INTERVIEW

You'll have an in-depth phone conversation with Edgewood's founder, Brian Schafer, to discuss the vision and intricacies of building your Sanctuary home.

WAIT LIST + DUE DILIGENCE



FULL-SERVICE PACKAGE



CONTRACTS



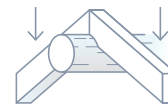
SITE VISIT



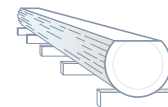
DESIGN



INTERIOR
SERVICES



ENGINEERING



PRODUCTION



INSTALLATION

THE SANCTUARY HOME LINE

Note: The entire Sanctuary Home Line features turn-key pricing (including amenities) based on the historical record from the first build.

The HIDEOUT

3 BD, 3 BA	starting at \$2,200,000	living space 3,320 sqft	exterior living 2,220 sqft
------------	----------------------------	----------------------------	-------------------------------

Nestled on a ranch near one of Colorado's mountain resort towns, the Hideout offers ultimate privacy and is designed to withstand the most extreme storms and snow loads. It features an open floor plan, with a combined living room and dining room, expansive views from the Glass Forest®, and twin luxurious master suites. A bunk room in the loft provides ample room for friends and family.



HIDEOUT *cont.*



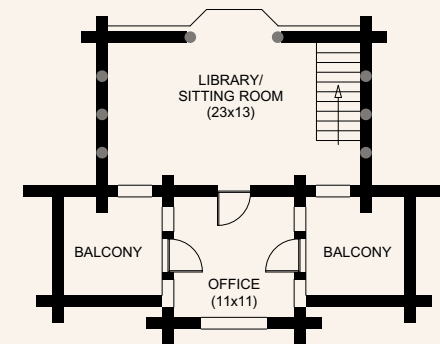
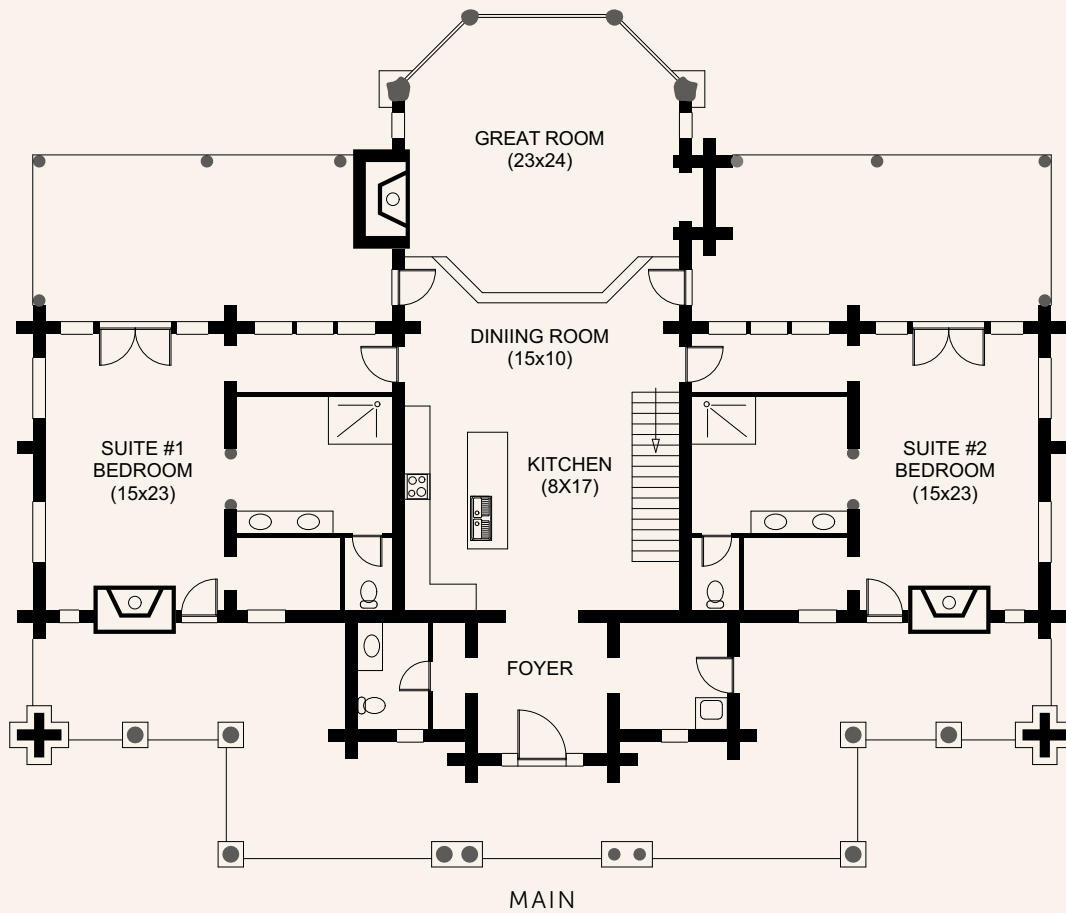
SPECIAL FEATURES

- Thermal Blanket™ roof system
- Glass Forest®
- Ground-mounted solar system
- Radiant heating system
- Double master suites
- Wood storage



HIDEOUT *cont.*

3 BD, 3 BA	starting at \$2,200,000	living space 3,320 sqft	exterior living 2,220 sqft
------------	----------------------------	----------------------------	-------------------------------



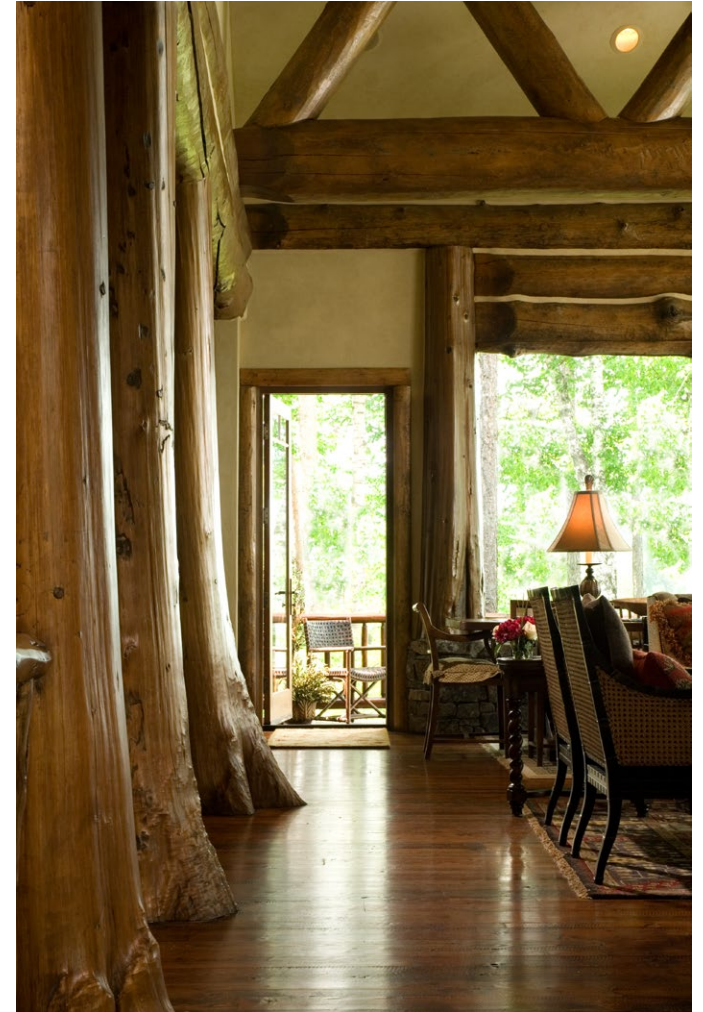
UPPER

THE SANCTUARY HOME LINE

The CABIN

4 BD, 5 BA	starting at \$2,350,000	living space 4,800 sqft	garage + exterior living 2,400 sqft
------------	----------------------------	----------------------------	--

A lakeside Montana getaway with breathtaking views, a warm, expansive layout, and inviting living spaces. With two Glass Forests® framing the stunning lake views, a true chef's kitchen, and multiple outdoor spaces, the Cabin is the perfect home for gathering friends and family to relax and enjoy the country.



The CABIN *cont.*



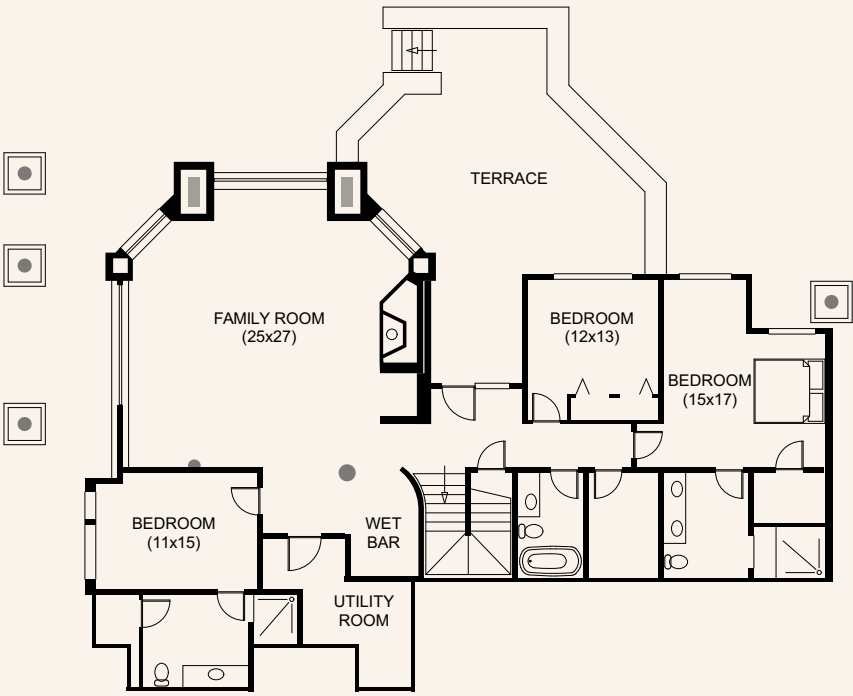
SPECIAL FEATURES

- Two Glass Forests®
- Thermal Blanket™ roofing system
- Radiant heating system
- Two wet bars
- Expansive outdoor living space
- Passive solar design
- Convective cooling
- Greenhouse

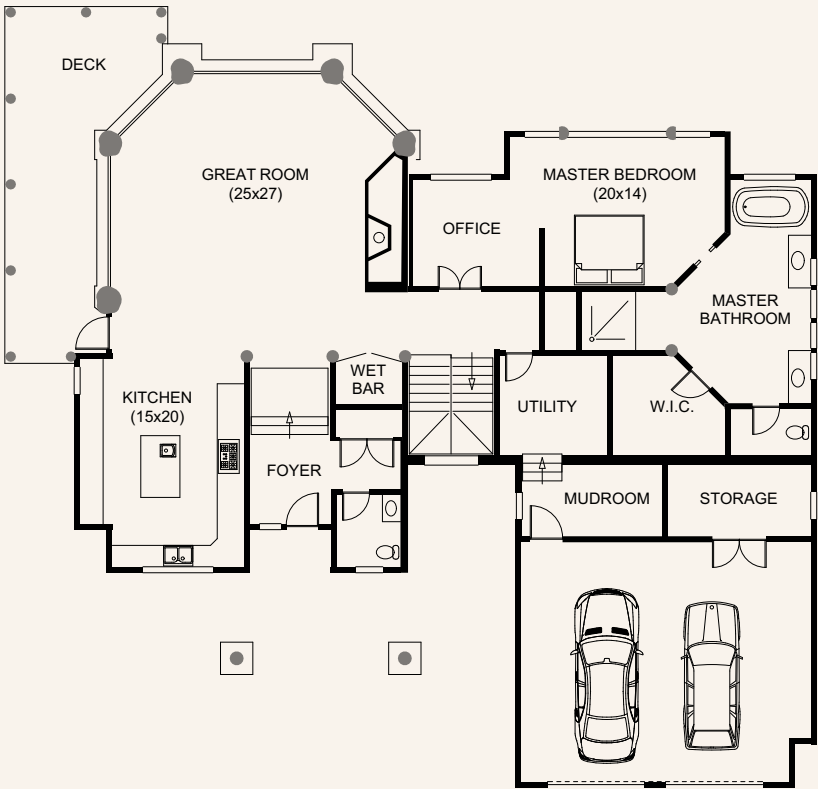


The **CABIN** *cont.*

4 BD, 5 BA	starting at	living space	garage + exterior living
	\$2,350,000	4,800 sqft	2,400 sqft



MAIN



LOWER

The HIDDEN

3 BD, 4 BA	starting at \$2,500,000	living space 3,970 sqft	exterior living 1,632 sqft
------------	----------------------------	----------------------------	-------------------------------

True off-grid living in the mountains of Idaho. With its open kitchen, a spacious loft for entertaining, covered patio with stone fireplace, and breathtaking views through the Glass Forest®, the Hidden is designed to be enjoyed in all four seasons.



HIDDEN *cont.*



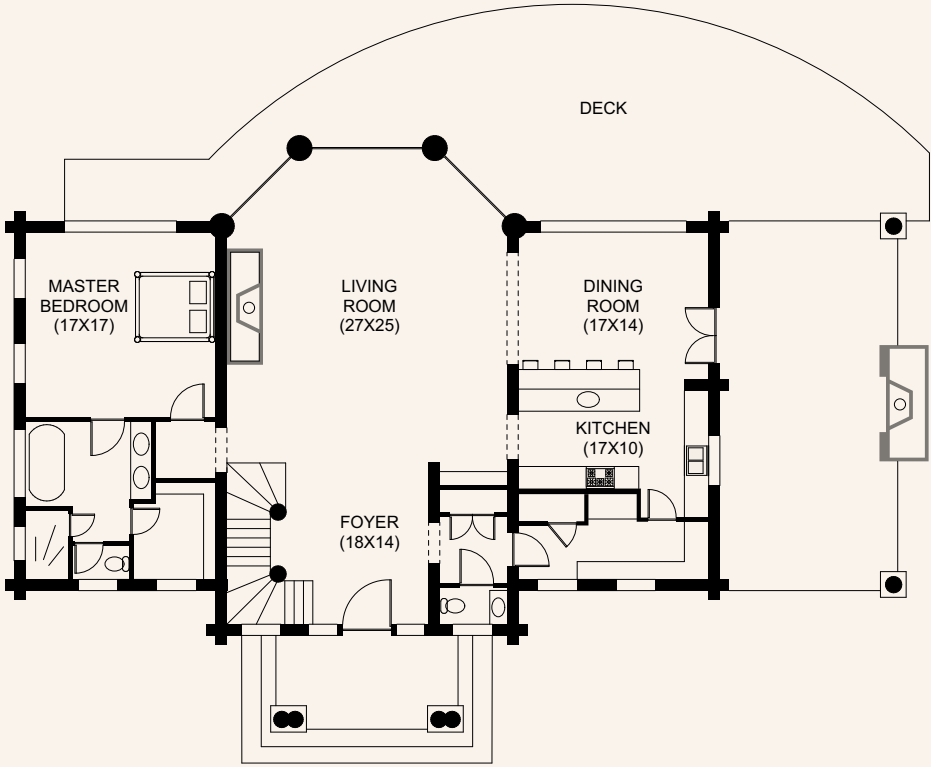
SPECIAL FEATURES

- Thermal Blanket™ roof system
- Glass Forest®
- Ground-mounted solar system
- Advanced security
- Matching guest suites
- Open log/timber stairs
- Covered patio with outdoor traditional fireplace
- Closed-loop water system

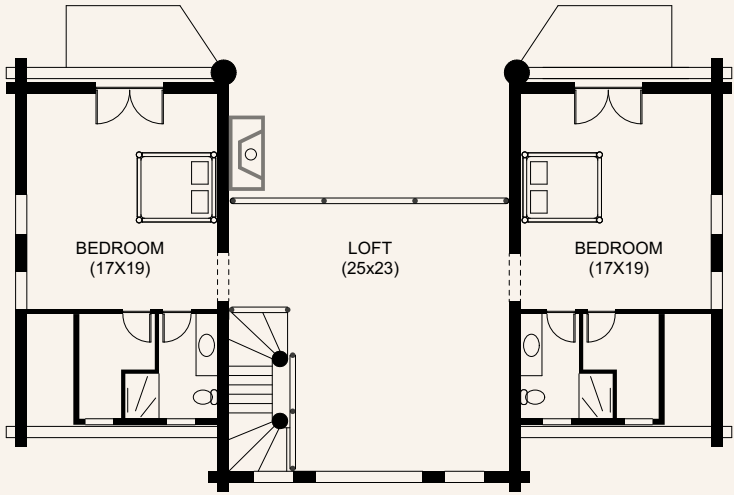


HIDDEN *cont.*

3 BD, 4 BA	starting at \$2,500,000	living space 3,970 sqft	exterior living 1,632 sqft
------------	----------------------------	----------------------------	-------------------------------



MAIN

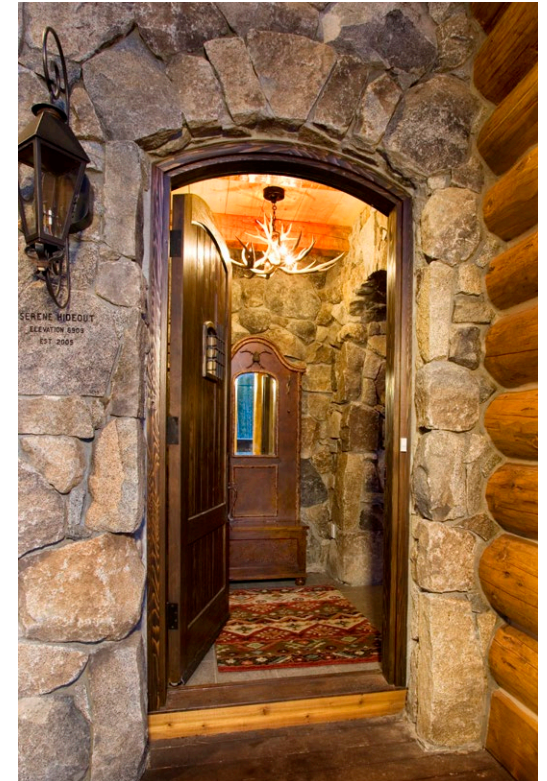


UPPER

The RUSTIC

3 BD, 2 BA | *starting at* \$2,900,000 | *living space* 3,000 sqft | *garage + exterior living* 4,780 sqft

Embark on adventures from a secluded, California mountain hideaway. This quaint loft with handcrafted trusses is designed to handle the most extreme weather and the heaviest snow loads. The lower level is specially designed for the maintenance, repair, and storage of all your toys.



RUSTIC *cont.*



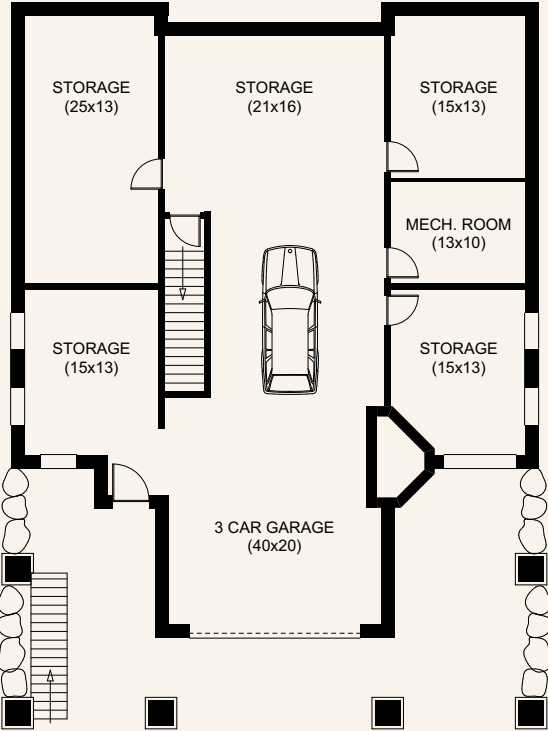
SPECIAL FEATURES

- Thermal Blanket™ roof system
- Glass Forest®
- Off-grid water system
- Bunker
- Gun/safe room
- Oversized kitchen
- Wood storage
- Stone pizza oven
- Double log trusses and 20" roof logs for 425# snow load

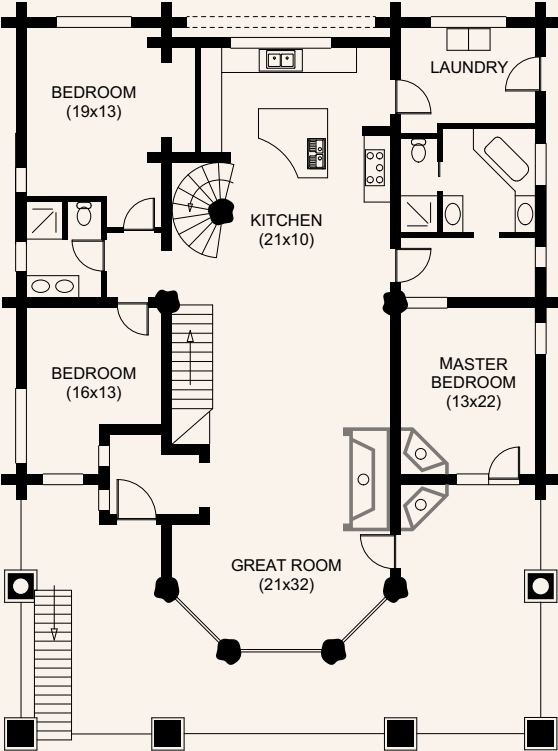


RUSTIC *cont.*

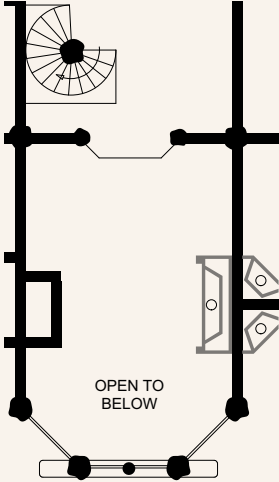
3 BD, 2 BA	starting at	living space	garage + exterior living
	\$2,900,000	3,000 sqft	4,780 sqft



LOWER



MAIN



UPPER

THE SANCTUARY HOME LINE

The LUXURY

3 BD, 6 BA | *starting at* \$3,725,000 | *living space* 6,382 sqft | *garage + exterior living* 3,150 sqft

A sophisticated Colorado mountain cabin that is warm, easily accessible, and designed to accommodate friends and family for the ultimate fishing or skiing trip. With lots of windows and bright, inviting spaces, the Luxury captures the beauty of the Colorado Rockies year-round. It features a handcrafted, spiral log staircase, four fireplaces with exceptional stonework, a porte-cochère, a massive game room/wet bar and a bunk room over the garage.



LUXURY *cont.*

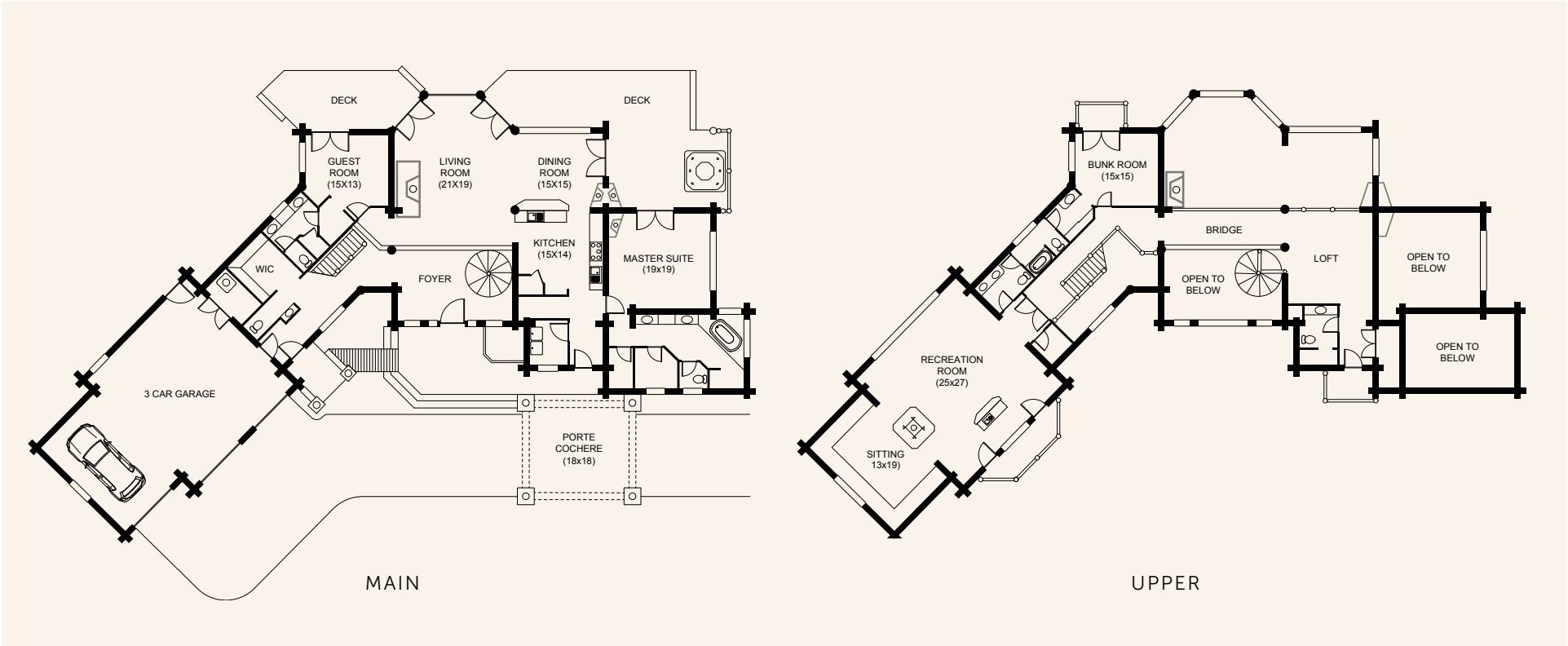


SPECIAL FEATURES

- Thermal Blanket™ roof system
- Glass Forest®
- Off-grid water system
- Radiant heating system
- Solar power with back-up generator
- Advanced security
- Two log stair systems
- Massive game room with wet bar and bunk room over 3-car garage
- Porte-cochère
- Four traditional masonry wood burning fireplaces

LUXURY *cont.*

3 BD, 6 BA	starting at	living space	garage + exterior living
	\$3,725,000	6,382 sqft	3,150 sqft





THE EDGEWOOD DIFFERENCE

Decades of experience building in remote locations, combined with our existing line of Sanctuary home plans and sophisticated Schafer Systems, means we can help you *live outside* faster than you thought possible and on budget. With a single entity handling all your needs, building your dream home can be an efficient and enjoyable process.

NEXT STEPS

[Click here to get started building your Sanctuary home.](#)

We'll ask you to complete a brief questionnaire to determine if we are a good fit for your project.



13526 Hwy 55
McCall, Idaho 83638
(208) 634-0055
office@edgewoodlog.com