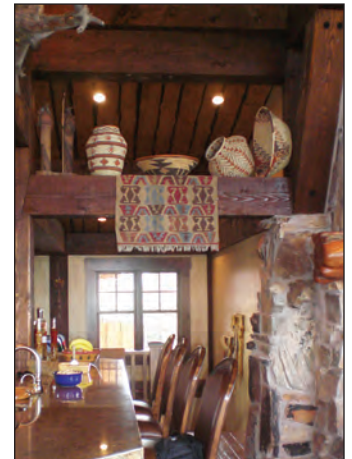


HANDSOME | *Near Zion National Park, Utah*



“Initially, we thought we wanted a hand crafted log home. We directed Brian and his staff to start in this direction. As the process progressed, Brian listened patiently to our input and was ultimately able to guide us down the right path. The result is a truly handsome one of a kind home that blends seamlessly into the high desert.”

- Property Owner



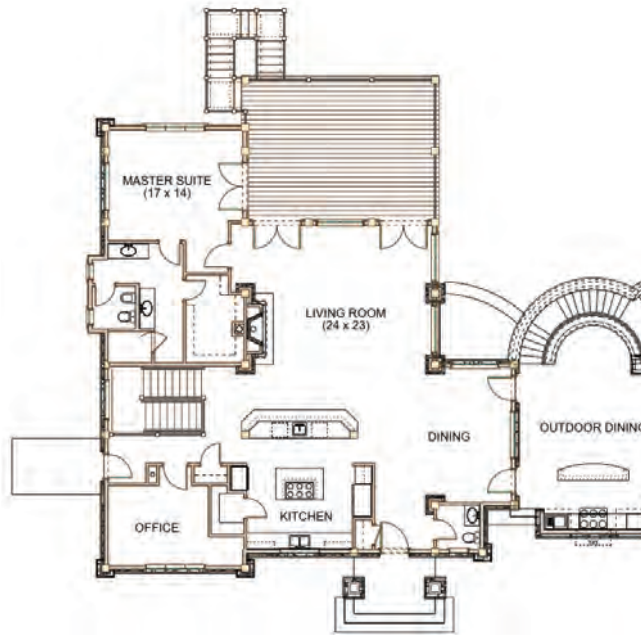
13526 Hwy 55
McCall, ID 83638
ph#: (208) 634-0055

6254 E. Parks Rd (PO Box 509)
Athol, Idaho, 83801
ph#: 208-683-1444
fax: 208-683-0549

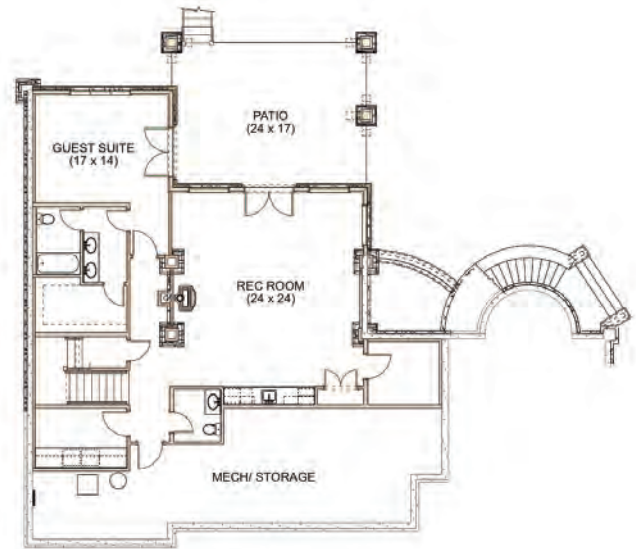
brian@edgewoodlog.com
www.edgewoodlog.com

HANDSOME

Near Zion National Park, Utah



MAIN | level



LOWER | level

Square Footage: Main Level: 3,918 SF, Lower Level: 2,650 SF
Total: 6,568 SF.

Location: Near Zion National Park, Utah

Bedrooms / Baths: 2-3 / 3

Built: 2010

Type of Package: Custom "Western Massive" Timber Frame & Weather Tight Shell

Package Details: Exterior Siding/Trim, Thermal Blanket Roof with "Buffalo Board" Ceilings,
Custom Wood, Windows & Doors.

Special Features: Massive Structural Hammer Beam Style Trusses

Architecture: Complete Architectural / Structural Engineering Service



13526 Hwy 55
McCall, ID 83638
ph#: (208) 634-0055

6254 E. Parks Rd (PO Box 509)
Athol, Idaho, 83801
ph#: 208-683-1444
fax: 208-683-0549

brian@edgewoodlog.com
www.edgewoodlog.com